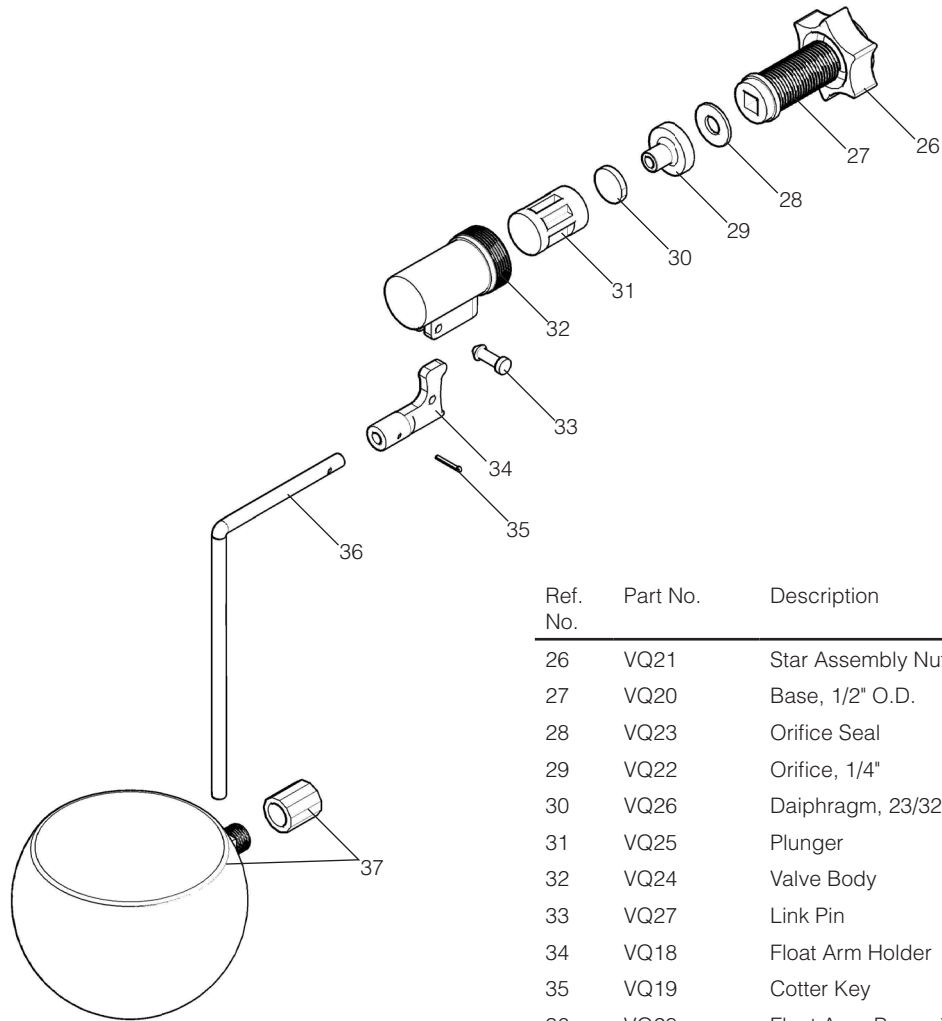


REPAIR PARTS LIST

VQ150



Ref. No.	Part No.	Description	Qty
26	VQ21	Star Assembly Nut	1
27	VQ20	Base, 1/2" O.D.	1
28	VQ23	Orifice Seal	1
29	VQ22	Orifice, 1/4"	1
30	VQ26	Daiphragm, 23/32	1
31	VQ25	Plunger	1
32	VQ24	Valve Body	1
33	VQ27	Link Pin	1
34	VQ18	Float Arm Holder	1
35	VQ19	Cotter Key	1
36	VQ28	Float Arm, Brass, 7"	1
37	VQ31	Float and Float Nut	1

Our VQ150 Valve has 1/2" NPT Threads and attaches to a 3/4" threaded tee using an OP295 Reducing Bushing. The flow rate is about 10 gallons a minute. Adjust water level by loosening the float nut and raising or lowering the float.

MODEL NUMBER

The MODEL NUMBER is: VQ150 Valve

WHEN ORDERING PARTS

- (1) Show MODEL NUMBER and NAME: Example - VQ150 Valve
- (2) Show PART NUMBER and FULL DESCRIPTION of part: Example - VQ31 Float and Float Nut

HOW TO ORDER PARTS

Repairs parts may be ordered from your dealer.



PO BOX 2000 • HOUGHTON, IOWA 52631 • USA
 PHONE: 319-469-4141 • FAX: 319-469-4402
 WEB: www.haweyesteel.com • E-mail: sales@haweyesteel.com



ISHVQ150
 REV. 3.1
 PRINTED IN U.S.A.